

CATALOGUE & PRICE GUIDE

2012

BurwellPrint
your community print centre

BurwellPrint

your community print centre

Burwell Community Print Centre was established in 1988 at Burwell Village College as a print resource for the local community and also to provide work training for a small number of adults with learning disabilities.

The Print Centre moved to its purpose-built premises on the school site in 1999 and since then we have gone from strength to strength.

We are a Registered Charity and a Limited Company, more commonly known as a Social Training Enterprise, with strong links to other similar organisations in the area as members of STEnG (Social Training Enterprise Group).

We provide support for up to 26 people with learning **disabilities known as "Printers" who are involved in all aspects of running Burwell Print.**

Most of the Printers participate in an accredited training programme through our partnership with Cambridge Regional College.

Primarily we are a **digital print & copy shop**, with excellent quality colour and black Xerox printing machines providing fast turnaround for flyers, business cards, village magazines, etc.

We have recently extended our range to include large format colour printing up to A1 size for posters, photographs and artwork.

Custom print services include t-shirts and photo print items such as mugs, mouse-mats, place-mats, coasters, jigsaws, etc.

We also provide a comprehensive range of print finishing services, such as mail-outs, envelope labelling and stuffing.

Our full-time design team are able to give you advice or produce a complete bespoke design.

Please call us on 01638 613102 to discuss your requirements and get a no-obligation quote.

“We print stuff...”

www.burwellprint.co.uk

CONTENTS

COLOUR PRINTING	2
BLACK PRINTING	3
GRAPHIC DESIGN	4
BUSINESS CARDS	5
STATIONERY	5
BUSINESS STARTER PACKS	5
FLYERS & MAILERS	6
TRIFOLD LEAFLETS	6
MAIL-OUTS	6
GREETING CARDS	7
POSTCARDS	7
ENVELOPES	7
CALENDARS	8
UNIBIND	8
LAMINATING	9
BINDING	9
BOOKLET MAKING	9
FINE ART PRINTING	10
PERSONALISED GIFTS & BAGS	11
CLOTHING & SPORTSWEAR	12

COLOUR PRINTING

		1 - 9	10 - 49	50 - 249	250 - 499	500 - 999	1000 - 1999	2000 +
A4	Single Sided	60p	50p	30p	25p	20p	15p	12p
	Double Sided	70p	60p	40p	35p	30p	25p	22p
A3	Single Sided	£1.20	£1.00	60p	50p	40p	30p	24p
	Double Sided	£1.40	£1.15	75p	65p	55p	45p	39p

Prices shown are per sheet, printed on 100g white paper.
Please see below for extra charges for special paper or card etc.

ALL PRICES ARE SUBJECT TO VAT IF APPLICABLE

ADDITIONS

Please add these prices (per sheet) to the printing costs shown.

80g Recycled Paper	1p
100g Conqueror Paper	4p
120g Premium Paper	2p
160g Silk Card	3p
300g Silk Card	6p
A4 Avery Laser Labels	30p
OHP Acetates	25p

A4	A3
1p	2p
4p	
2p	4p
3p	6p
6p	12p
30p	
25p	

PRINT SET-UP CHARGES

We can advise you if these additional charges will apply.

£2

For setting up your computer files to be print ready.

£5

Should your own files require reformatting or conversion in another software package.

NEED A LOGO?
WE CAN DESIGN
IT FOR YOU

BLACK PRINTING

		1 - 9	10 - 99	100 - 999	1000 - 1999	2000 - 4999	5000 +
A4	Single Sided	10p	9p	7p	5p	4p	3p
	Double Sided	14p	13p	11p	9p	7p	5p
A3	Single Sided	20p	18p	14p	10p	8p	6p
	Double Sided	24p	22p	18p	13p	11p	9p

Prices shown are per sheet, printed on 80g white paper.
Please see below for extra charges for special paper or card etc.

ALL PRICES ARE SUBJECT TO VAT IF APPLICABLE

ADDITIONS WHITE

Please add these prices (per sheet) to the printing costs shown above

80g Recycled Paper
100g Conqueror Paper
120g Premium Paper
160g Silk Card
300g Silk Card

A4	A3
1p	2p
4p	
2p	4p
3p	6p
6p	12p

COLOURED

Please add these prices (per sheet) to the colour printing costs shown.

80g Coloured Paper
100g Coloured Paper
120g Coloured Paper
160g Coloured Card

A4	A3
1p	2p
2p	4p
3p	6p
4p	8p

Other paper and card stocks are available please ask for details

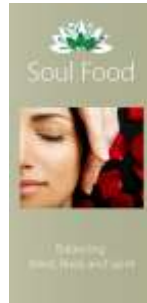
FULL BLEED

This is printing from one edge of the paper to the other without any borders. This is useful for printing brochures, posters, and other marketing materials. The paper is trimmed after printing to ensure the ink runs fully to the edge. **We add a surcharge of 1p/A4 and 2p/A3 for this specification.**

GRAPHIC DESIGN

Our design team can offer your business or organisation a professional and cost-effective service.

- Corporate Identity
- Branding
- Leaflets
- Catalogues
- Brochures
- Annual Reports
- Prospectus
- Display Graphics
- Signage
- Illustration
- Photography



BUSINESS CARDS

	50	100	200	250	500	750	1000	2000
Colour Single Sided	£9.50	£14.50	£21.50	£24	£41	£53.50	£61.50	£91
Colour Double Sided	£14	£21.50	£32	£36	£61.50	£80	£92.	£136.50
Black Single Sided	£4.25	£7.25	£10.75	£12	£20.50	£26.75	£30.75	£45.50
Black Double Sided	£7	£10.75	£16	£18	£30.75	£40	£46.	£68.25

DESIGN AND SET-UP CHARGES ARE NOT INCLUDED IN THESE PRICES

ALL PRICES ARE SUBJECT TO VAT

Business cards are printed on top quality 300g card. Standard size is 85mm x 55mm, either portrait or landscape. Once the final design is approved, we can print and supply your cards within 48 hours.

Fixed design charges for Business Cards: £15 for single-sided, £25 for double sided.

STATIONERY

	1 - 499	500 - 999	1000+
A4 Letterheads	22p	17p	12p
DL Compliment Slips	8p	6p	4p

Colour Letterheads, continuation sheets and compliment slips on top quality 100g paper.

Technical note: Digital printed letterheads can only be overprinted using an office inkjet printer. Please ask one of our print specialists for more information.

Conqueror Laid or Wove 100g stock is an additional 4p per A4 letterhead and pro rata for compliment slips

STARTER PACKS

Designed to help your new business get off to a flying start without breaking the bank or committing to large print runs.

100 A4 Letterheads + 100 Business Cards + 100 Compliment Slips	£40
250 A4 Letterheads + 250 Business Cards + 250 Compliment Slips	£89
250 A4 Letterheads + 250 Business Cards + 250 A5 Flyers	£100

These are colour letterheads, DL compliment slips and single-sided cards, A5 single-sided flyers.

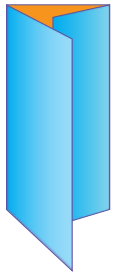
FLYERS & MAILERS

		500 - 999	1000 - 1999	2000 +
A5	Single Sided	13p	10p	8p
	Double Sided	18p	15p	13p
A4	Single Sided	20p	15p	12p
	Double Sided	30p	25p	22p

FLYERS ARE NOT SUBJECT TO VAT

Promote your business or event with our full colour flyers printed on premium 120g silk paper.
Please ask for an individual quote for other sizes.

TRIFOLD LEAFLETS



DL finished size

1 - 49	50 - 249	250 - 499	500 - 999	1000 - 1999	2000 +
64p	44p	39p	34p	29p	26p

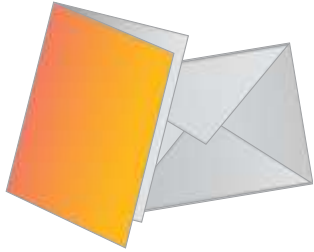
LEAFLETS ARE NOT SUBJECT TO VAT

An excellent way to pack lots of information about your organisation, business or event into a handy sized leaflet.

MAIL-OUTS and DIRECT MAIL SERVICES

Why not let us handle your next mail-out? We can supply the envelopes, print address labels from your database and handle the posting for you. Please ask for full details.

GREETING CARDS



	20 - 99	100 - 499	500 - 999	1000 +
A5	65p	50p	45p	40p
A6	40p	35p	30p	27p

GREETINGS CARDS ARE SUBJECT TO VAT

Colour greetings cards printed on 300g white card with black printed greeting on the inside. Creased, folded, and supplied complete with a traditional white gummed diamond flap envelope. Clear plastic display pouches are available. C6-5p or C5-10p.

POSTCARDS



	20 - 99	100 - 499	500 - 999	1000 +
A5	35p	25p	23p	20p
A6	17p	12p	11p	10p

POSTCARDS ARE SUBJECT TO VAT

Postcards are a cost-effective way to give instant impact to your marketing material or advertising campaign. Colour postcards printed on 300g white card and printed in black on the reverse. **If this specification doesn't meet with your requirements, then call us for a quote.**

ENVELOPES



	DL	C6	C5	C4
Business Envelopes		3p	5p	10p
Diamond Greetings		5p	8p	
Conqueror White	12p	9p	17p	

ALL PLUS VAT

WALL CALENDARS



DOUBLE-SIDED A4
A3
SLIM-LINE

1 - 4	5 - 19	20 - 39	40 - 69	70 +
£8	£6	£5	£4.50	£4
£9.50	£8	£7	£6.50	£6
£8	£6	£5	£4.50	£4

7 Leaves printed on 300g card with card back and wire bound, supplied with a wall hanging loop.

Choose from A4, A3 or slim-line 148 x 420mm which you can personalise with your own photos or artwork.

SINGLE-SIDED A4
A3
SLIM-LINE

1 - 4	5 - 19	20 - 39	40 - 69	70 +
£8.50	£6.50	£5.50	£5	£4.50
£10.50	£8.50	£6.50	£7	£6.50
£8.50	£6.50	£5.50	£5	£4.50

13 Leaves printed on 300g card with card back and wire bound, supplied with a wall hanging loop.

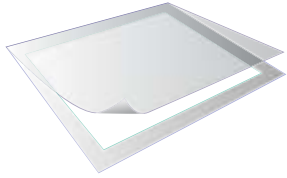
DESK CALENDARS

Individual printed leaves personalised with your own images, presented in a crystal desk display case. Two sizes available. CD size - 119 x 138mm, Landscape - 190 x 111mm. Ask to see a sample.

UNIBIND

Unibind is a unique binding system for making stylish reports, hardback photography books, portfolios, school year books etc. Please ask to see a sample. **Prices start from £1 per A4 for report covers and £5 per hardback album.**

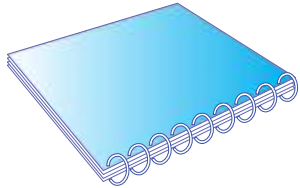
LAMINATING



	A5	A4	A3	A2	A1
GLOSS 1 - 9	60p	£1.00	£1.80	£6.00	£8.50
GLOSS 10 +	40p	80p	£1.50	£4.00	£7.00
MATT FINISH	Add 5p extra to the above prices for 200 micron MATT laminate pouches				

ALL PRICES SUBJECT TO VAT

BINDING



No. of sheets	1 - 20	21 - 40	41 - 60	61 - 80	81 - 100	101 - 120
Price per copy	75p	85p	95p	£1.05	£1.15	£1.25

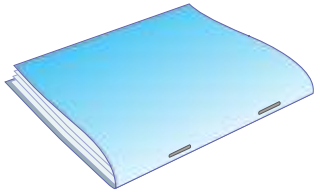
ALL PRICES SUBJECT TO VAT

For binding we use the Wire-O system. Unlike the plastic comb method this gives improved security to your document as pages cannot be easily removed.

A SET UP CHARGE OF £1 will be charged for each job.

ADDITIONS: PLASTIC REPORT COVERS - 25p each. 300g A4 CARD BACKING SHEET 6p each

BOOKLETS



No. of sheets	2 - 5	6 - 9	10 - 20	20 +
1 - 49	7p	10p	12p	POA
50 - 199	6p	8p	10p	POA
200 - 499	5p	7p	8p	POA
500 +	4p	6p	7p	POA

BOOKLETS ARE NOT SUBJECT TO VAT

FINE ART PRINTING



Our large format Canon printer is a 12 colour inkjet system that produces excellent tone and colour on sheet and roll material up to 610mm wide (24") making it ideal for fine art and photography editions with museum archival inks and papers, otherwise known as Gicleé printing.

Please make an appointment to talk to our design team, and they will help you choose the correct material.

"I had my original watercolour painting scanned and printed on Hahnemüle German Etching, the prints were so impressive, when I was framing them I couldn't tell which one was the original." Fran Godwood, Artist.

LOW COVER INKJETS

For artwork with less than 50% ink coverage and printed on 90gsm paper. Excellent for colour architect plans, diagrams etc.

POSTER PRINTS

Our top quality archival inkjet printing printed on 90gsm stock, Ideal for posters.

ALL LARGE FORMAT INKJET PRINTS ARE SUBJECT TO VAT

A5	A4	A3	A2	A1
£5	£7	£9	£18	£36
Photograf sizes are also available				

Photograf At 308gsm this is a heavy art paper, with a fibrous finish. The paper softens the image and mutes the colours giving a watercolour feel to the final image.

Pearl A slightly textured 285gsm semi-gloss paper. Holds more detail with punchier colours than the Photograf, whilst maintaining the illustrative/ painted feel.

German Etching This 310gsm heavyweight etching board is silky smooth with a fine surface texture. German Etching is one of the most popular media worldwide for artwork & photography.

Gloss FB The Baryta layer of this paper produces greater detail and definition, and excellent archival properties. 320gsm.

A3	A2	A1
£4	£5	£6

A3	A2	A1
£7	£14	£28
£6	£12	£24

PERSONALISED GIFTS



MUGS (supplied in a gift box)	Ceramic	£5	Porcelain	£6
MONEY BOX	Ceramic			£5
MOUSE MATS	Fabric	£5	Glossy	£6.50
PLACE MATS	Set of 2	£8	Set of 4	£14
COASTERS	Set of 4			£6.25
JIGSAW PUZZLES	30 piece	£6	96 piece	£8
FRIDGE MAGNETS	Round			£2.25
TEDDY BEARS (printed t-shirts)	Small	£6	Large	£9

ALL PRICES SUBJECT TO VAT

Transform your treasured photographs into individual gifts for friends, family and workmates. They also make excellent marketing and promotional gifts for your business or club. We can reproduce any print, digital photograph or artwork and you can also add a personal message to make it even more special.

PERSONALISED BAGS



SHOULDER BAG (Red or Black)	Small	£8	Medium	£11
CLASSIC BAG	Natural			£11
DENIM BAG	Denim			£7
BEACH BAG	Blue, Orange, Red			£12
TOTE SHOPPER (Unprinted)	Natural	£2	Colours	£2.50

ALL PRICES SUBJECT TO VAT

Come and see samples of our photo-print bags, wallets, and purses. They make excellent gifts for Birthdays, Valentines, Mothers & Fathers day etc. Just bring in your digital photographs and we can sort out the rest.

CLOTHING, SPORTSWEAR & BAGS



We print onto a wide range of clothing materials. T-shirts, Hoodies, Sportswear, Corporate shirts, Aprons and even Bags.

If you're having a stag or hen night, birthday party or corporate event, we can print a personalised message or logo onto your chosen garment.

The prices shown include a premium quality garment and printing up to an A4 size area, onto one side. Discounts are available for quantities.

CHILD'S WHITE PHOTO PRINT T-SHIRT	£6
WHITE PHOTO T-SHIRT (S-XXL)	£9
COLOURED T-SHIRT (S-XXL)	£11
SWEATSHIRT	£15
POLO SHIRT	£15
COLLEGE HOODIE	£16

VINYL CUTTING



Cut vinyl can be used in many imaginative ways including:

- * Vehicle graphics for cars, vans and motorcycles
- * Signs and displays for shops, exhibitions and offices
- * Interior décor for your home

We can provide samples of the vinyl materials and scale drawings. Send us the artwork or we can design it for you, just pop in and discuss your project with a member of our design team.

Our Mission

To promote independence and increase self-esteem for adults with learning disabilities in a stimulating working environment, while providing quality community printing and related services.

Our Vision

Provide a base for vocational training and work experience within a sheltered working environment, providing a service based on individual needs.

Promote self-advocacy within an organisation where all can be fully and actively involved in every aspect of its operation.

Run a quality community print service.

Raise awareness within the local community of the potential of people with learning disabilities.

Enable individuals to access employment services.

BurwellPrint

your community print centre

OPEN WEEKDAYS 9am - 4.30pm
SATURDAYS 9am - 12noon

GENERAL ENQUIRIES

info@burwellprint.co.uk

QUOTATIONS AND PRICING

quote@burwellprint.co.uk

DESIGN AND ARTWORK

design@burwellprint.co.uk

WEBSITE

www.burwellprint.co.uk

Telephone: 01638 613102

Burwell Community Print Centre Limited
The Causeway, Burwell, Cambridge CB25 0DU

Registered Charity No. 1053026
Company Registered in England and Wales No. 3156756
VAT Reg No. 720 2823 70

© 2011 Burwell Community Print Centre E&OE